

# Quick Installation Guide

### APPLICATIONS

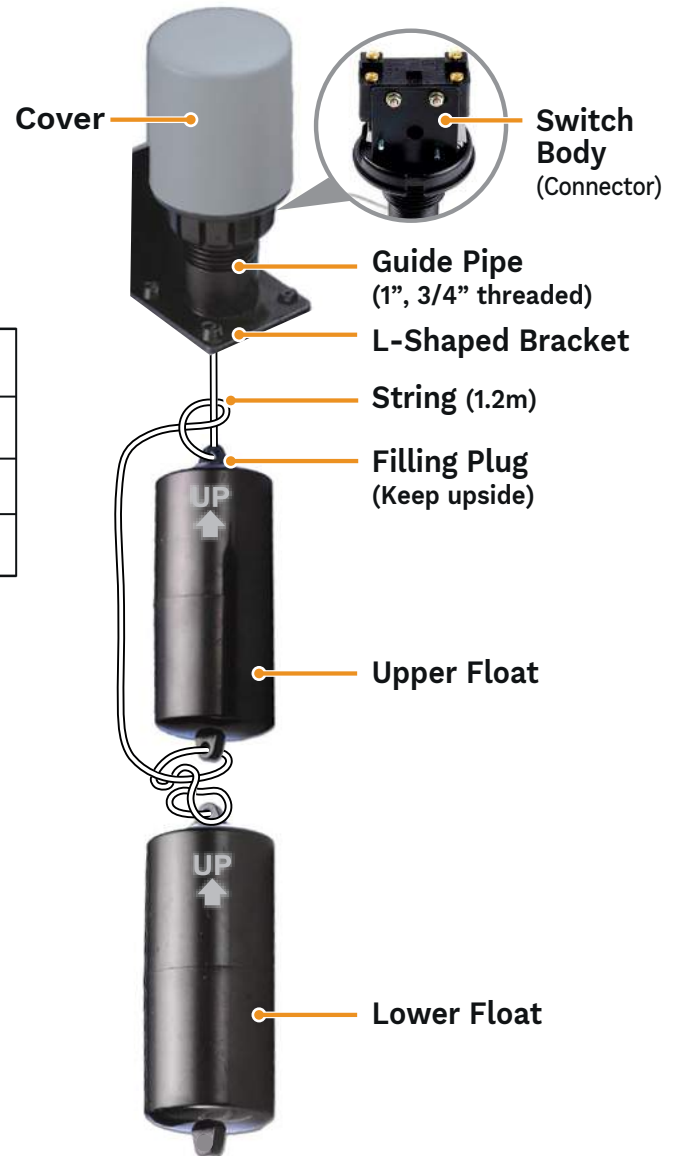
- Direct pump control for maintaining level.
- Automatic tank dump operations.
- Control levels or provide alarms in sumps, low-pressure boilers, and various wastewater/ sewage treatment processes.

### SPECIFICATIONS

Power Supply	110/220V, 50/60HZ	Control Range	0.2-5.0 meters
Rating	220V 7.5A / 110V 15A	Temperature Limits	5~60°C
Connection	1" G	Mounting	Vertical installation
Max. Pump Power (Direct Control)		1.0 HP	

### INSTALLATION

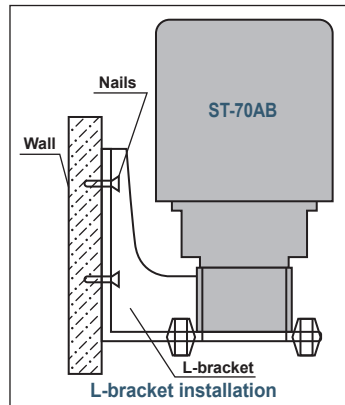
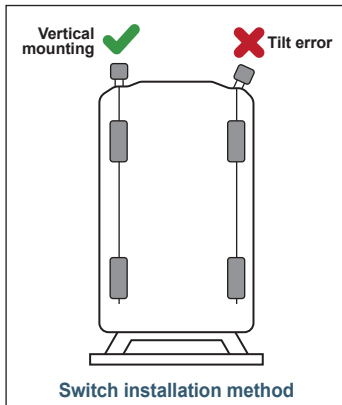
1. Remove all packing material. Check all parts.
2. Make sure the power is shot down.
3. When mounting the switch body on the top of a tank, install the switch body (with the string) into the threaded sleeve previously welded to the tank. Ensure that the switch is vertical to the water level, the string does not touch the inner wall of the guide pipe, and that the floats have free vertical motion.
4. Connect the two floats with the attached string. Position the Upper Float at the full-water level, and then position the Lower Float at the end of the string. Ensure that the Filling Plug is on the top (Up). The control range can be adjusted by changing the distance (the length of the rope) between the centers of the Upper float and the Lower float.
5. If you need to mount the switch vertically on the inside wall of the tank, use an L-shaped bracket (Optional) as a support. In any case, please leave enough space between the tank wall and the floats.



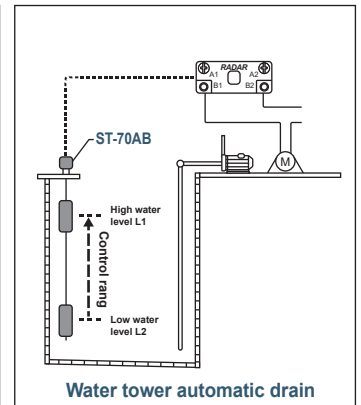
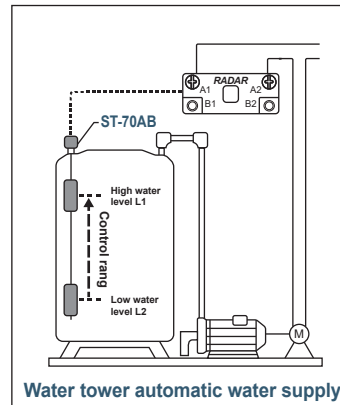
#### NOTICE!

1. Check all ratings given in the instructions and on the product to ensure the product is suitable for your application. Do not exceed the electrical ratings or temperature ratings of the product.
2. Typically, the float is pre-filled with water. If it isn't, please fill it completely with water and then place the water filling plug into position.

## Mounting Method

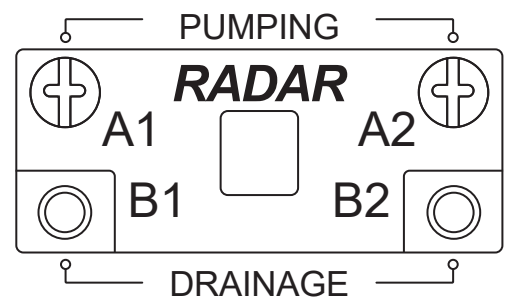


## Installation Example



## CONNECTION

1. Remove the Cover of the Switch Body.
2. For water supply mode, connect the wire to terminals A1 & A2.
3. For drainage mode, connect the wire to terminals B1 & B2. Remove 2 bolts from terminal A and transfer them to terminal B. Then, connect the wire to terminal B1 & B2.



### NOTICE!

1. Please ensure that the power supply is disconnected before commencing installation to avoid potential equipment damage or electrical shock.
2. All electrical systems must be installed by qualified, licensed electricians in compliance with the National Electric Code and all local regulations.
3. For drainage purposes, it is highly recommended to utilize this apparatus as a control switch for the magnetic or combination stator of the water pump, rather than directly controlling the water pump.

## MAINTENANCE

1. Inspect and clean the parts regularly.
2. Ensure that the cover is always in place to shield the internal components from dirt, dust, and weather.

### NOTICE!

The product information presented here reflects conditions at the time of publication. Consult the distributor regarding discrepancies or inconsistencies. All contents and specifications are subject to change without prior notice.